

THEFT DETERRENT SYSTEM (Double Cab)

BE2KX-01

ON-VEHICLE INSPECTION

1. OUTLINE OF THEFT DETERRENT SYSTEM

- (a) When the theft deterrent system detects that the vehicle is being tampered with, the system sets off the alarm, causing the horns to sound and the lights to light up or flash in order to alert people around the vehicle to the theft.
- (b) The theft deterrent system has 2 modes; one is the active arming mode that is an initially set mode and another is the passive arming mode that can be switched by the hand-held tester.
- (c) Each mode (active and passive) has 4 states; the disarmed state, the arming preparation state, the armed state and the alarm sounding state.
- (1) Disarmed state:
- The alarm function is not operating.
 - The theft deterrent system is not operating.
- (2) Arming preparation state:
- The theft deterrent system is not operating.
- (3) Armed state:
- The theft deterrent system is operating.
- (4) Alarm sounding state:
- When the theft deterrent system detects that the vehicle is being tampered with while in the armed state, the system causes the horns to sound and the lights to light up or flash in order to alert people around the vehicle to the theft.

Refer to table below for alarm method and time:

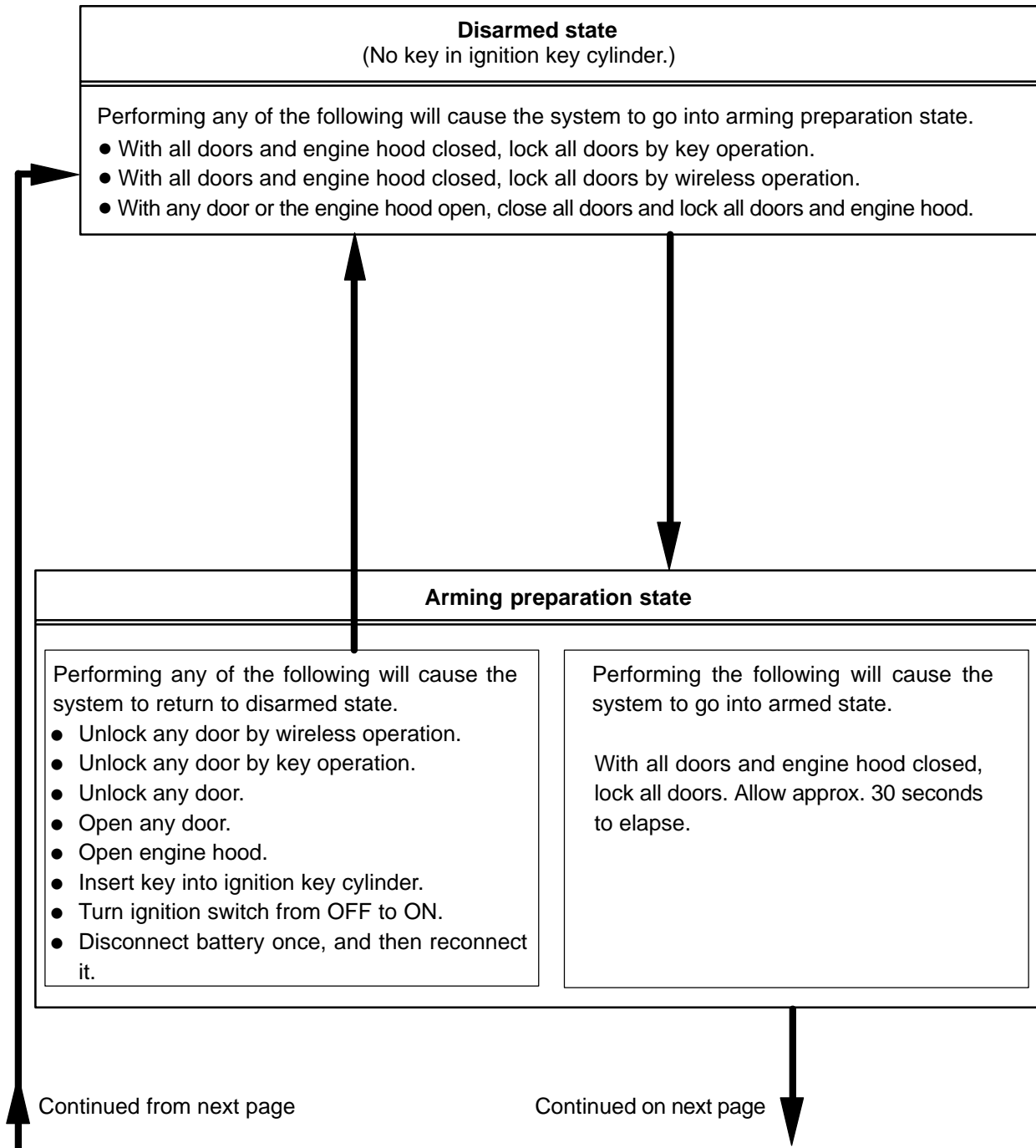
Alarming method	Headlight	Flashing at a cycle of approx. 0.4 seconds
	Taillight	Flashing at a cycle of approx. 0.4 seconds
	Interior light	Illuminating (turn on)
	Vehicle horn	Sounding at a cycle of approx. 0.4 seconds
	Security horn	Sounding at a cycle of approx. 0.4 seconds
Alarming time	Approx. 60 seconds	

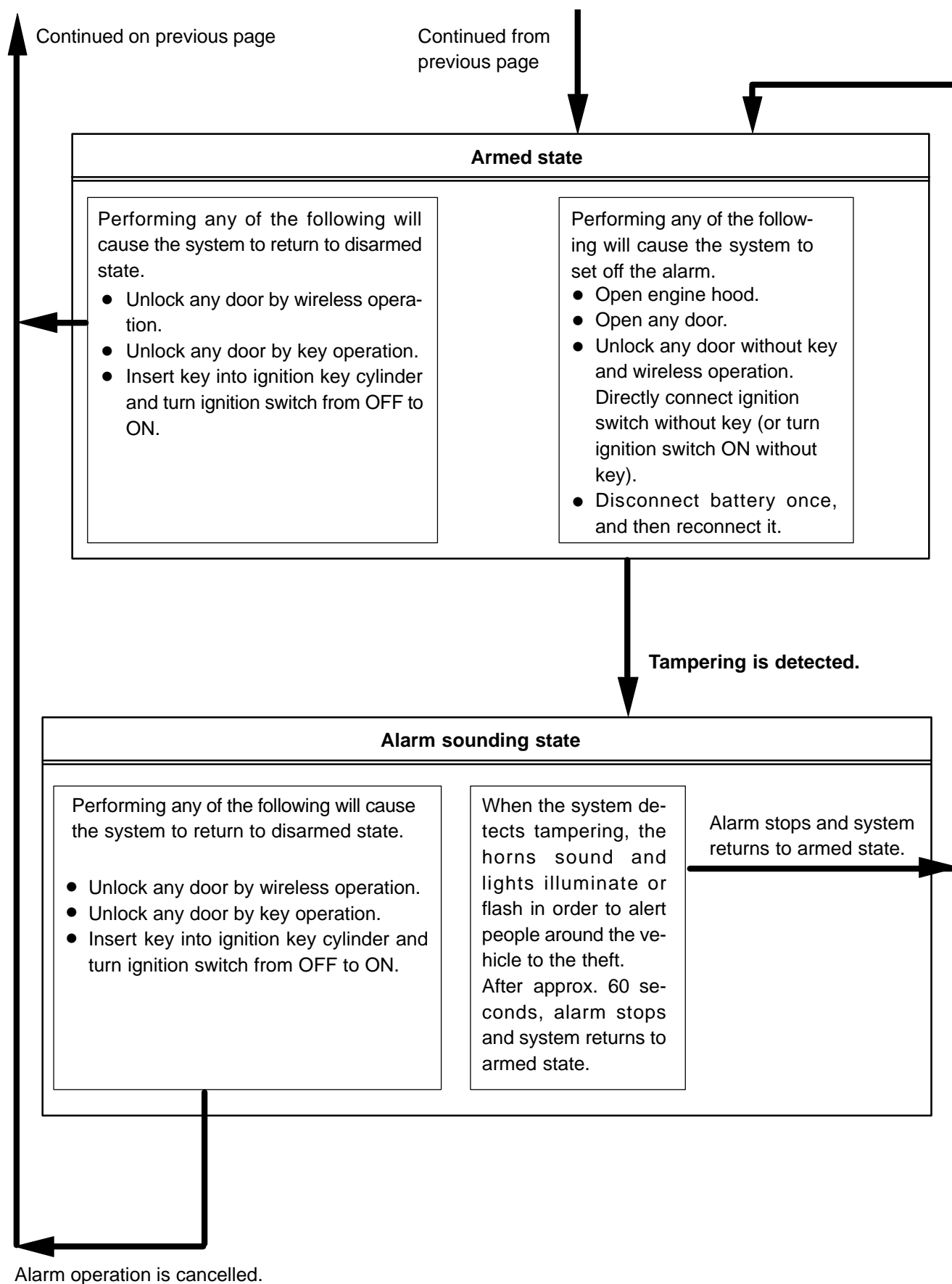
HINT:

If any of the doors are unlocked with no key in the ignition key cylinder during the alarm sounding state, a forced door lock signal will be output (see step 4).

2. ACTIVE ARMING MODE

- Active arming mode starts the alarm control immediately after the doors are locked.





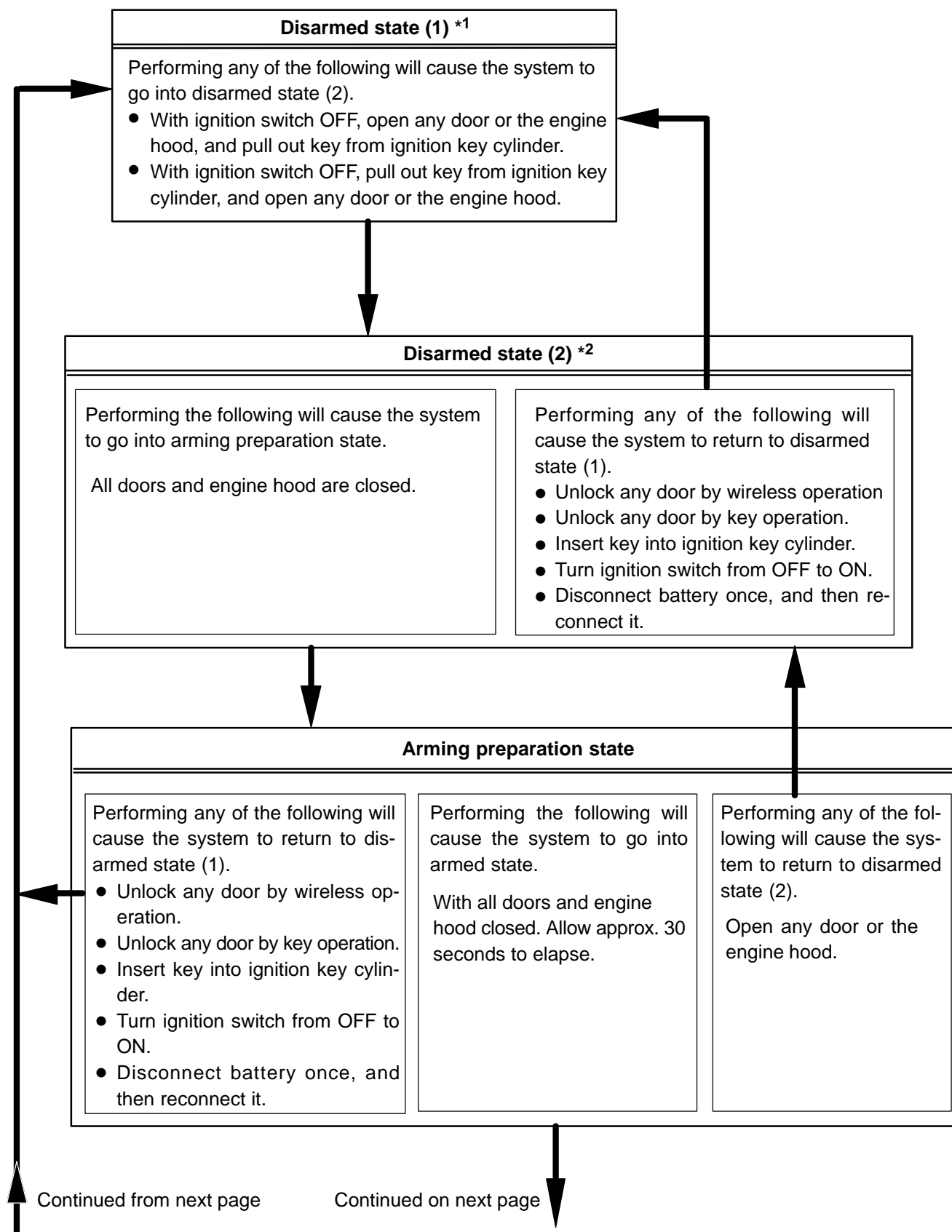
3. PASSIVE ARMING MODE

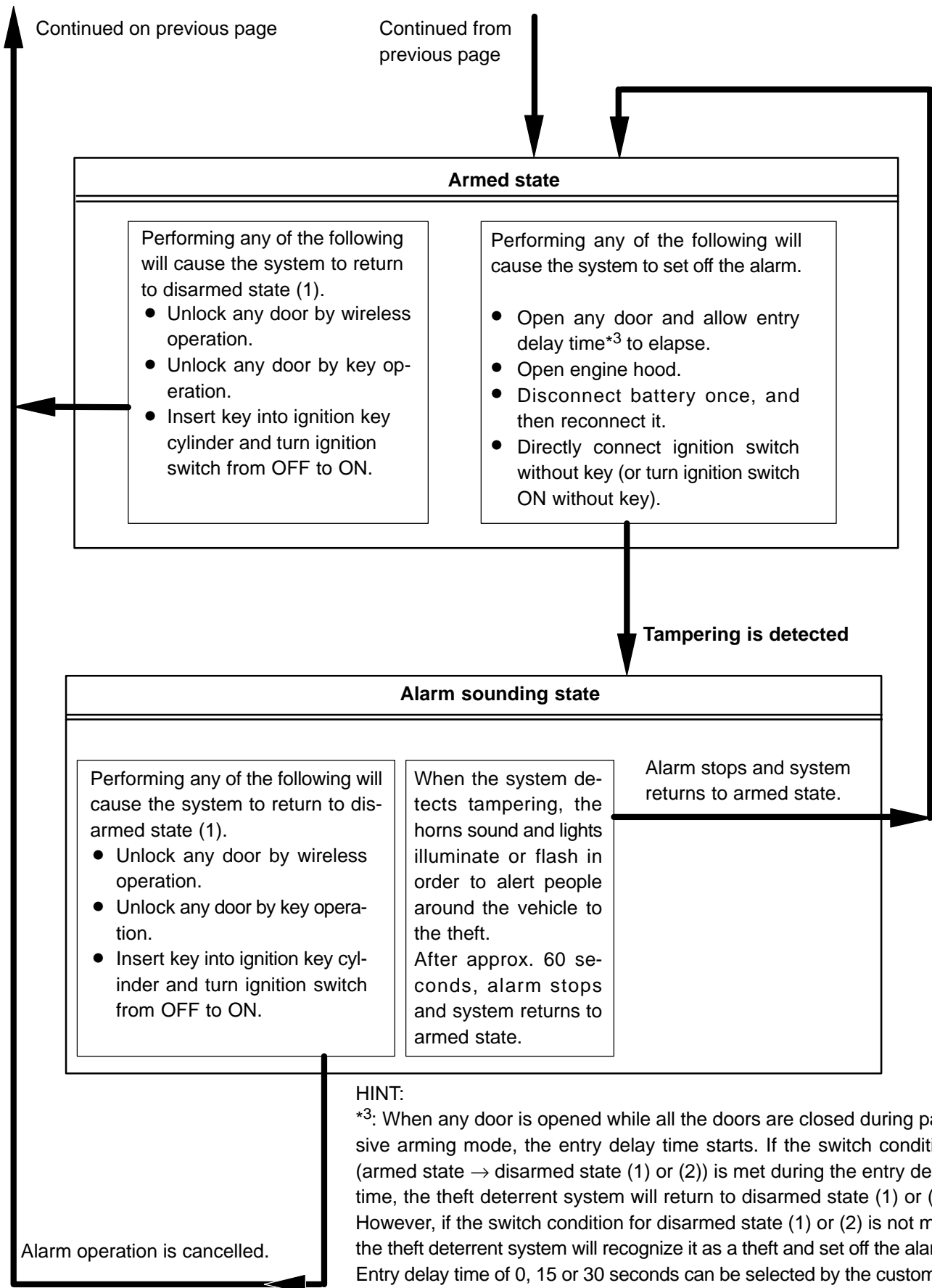
- Passive arming mode can be switched ON/OFF by the hand-held tester.
- The alarm is initially set (when shipped from factory) to active arming mode (not passive arming mode).
- During passive arming mode, the theft deterrent system goes into the armed state even if the doors are not locked.
- Passive arming mode starts the alarm control after the key is removed from the ignition key cylinder and the doors are closed.
- Detecting that the doors are unlocked does not set off the alarm during passive arming mode.
- A forced door lock signal is not output during passive arming mode (see step 4).
- When the theft deterrent system detects that the doors are opened during passive arming mode, the alarm is not set off immediately because an entry delay time is set.
- If any of the following conditions is met during passive arming mode, the theft deterrent system will switch to active arming mode.
 - With all doors and engine hood closed, lock all doors by key operation.
 - With all doors and engine hood closed, lock all doors by wireless operation.
 - With any door or the engine hood open, close all doors and lock all doors and engine hood.

HINT:

*1: Disarmed state (1) is the normal disarmed state.

*2: Disarmed state (2) is set from either the disarmed state (1) or the arming preparation state.





4. FORCED DOOR LOCK CONTROL

- (a) The forced door lock control prevents the vehicle from being tampered with. Immediately after a door is unlocked (alarm starts), the door is forced to lock by a forced door lock signal.

(1) Conditions that force the doors to lock:

When no key is in the ignition key cylinder, the doors will be forced to lock if any of the following conditions is met.

- The theft deterrent system is in the alarm sounding state of active arming mode.
- All the doors are locked. → Any door is unlocked.

5. Indicator light output

Condition	Indicator light
Disarmed state	OFF
Arming preparation state	ON
Armed state (Entry delay time)	BLINK (ON)
Alarm sounding state	ON

HINT:

Blinking frequency:

0.2 seconds (ON)

1.8 seconds (OFF)

6. PANIC ALARM CONTROL

- (a) The panic alarm control makes it possible for you to voluntarily set off the panic alarm by pressing the PANIC switch on the wireless transmitter. However, this control operates independently from the alarm control by the theft deterrent system (switched to the alarm sounding state from the armed state).

(1) Conditions that cause the panic alarm control to set off the panic alarm:

The panic alarm control sets off the panic alarm by pressing the PANIC switch on the wireless transmitter under the following conditions.

- The ignition switch is OFF.
- The theft deterrent system is not in the alarm sounding state (common to active arming mode and passive arming mode).
- The panic alarm control is not operating (the alarm is not set off).

(2) Conditions that cause the panic alarm control to shut off the alarm:

The panic alarm control shuts off the panic alarm when any of the following conditions is met during panic alarm operation.

- The ignition switch is turned ON.
- Either of the switches on the wireless transmitter (LOCK/UNLOCK) is pressed.
- The panic alarm ends (60 seconds have passed).
- The theft deterrent system switches to the alarm sounding state (common to active arming mode and passive arming mode). However, the alarm is still sounding, because the theft deterrent system has switched to the alarm sounding state. Conditions for canceling the panic alarm are the same as for the alarm control.

HINT:

Active arming mode: See step 2

Passive arming mode: See step 3

7. Switch to the active arming mode

HINT:

In each state of the passive arming mode, when the switch condition to the active mode (disarmed state of active arming mode → arming preparation state of active arming mode) is satisfied, the system will switch to each state of the active arming mode. In this case, the active arming mode will continue until the system switches to the disarmed state.

State of Passive Arming Mode Before Switch	State of Active Arming Mode After Switch
Disarmed state	Arming preparation state
Arming preparation state	Arming preparation state (continuing for 30 seconds)
Armed state (during entry delay time)	After alarming time has elapsed, the system will switch to the armed state
Alarm sounding state	After alarming time has elapsed, the system will switch to the armed state